

# HELISTATION MAFATE LA NOUVELLE



PLAN CADASTRAL AU 1/10 000

Auteur :

16/12/2015

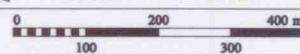


- Cadastre UT Mafate CSV
- Helistation Mafate Helic
- Parcelle 408000bh0037

Commentaires



Echelle : 1 : 10000



© IGN / ONF Toute reproduction interdite

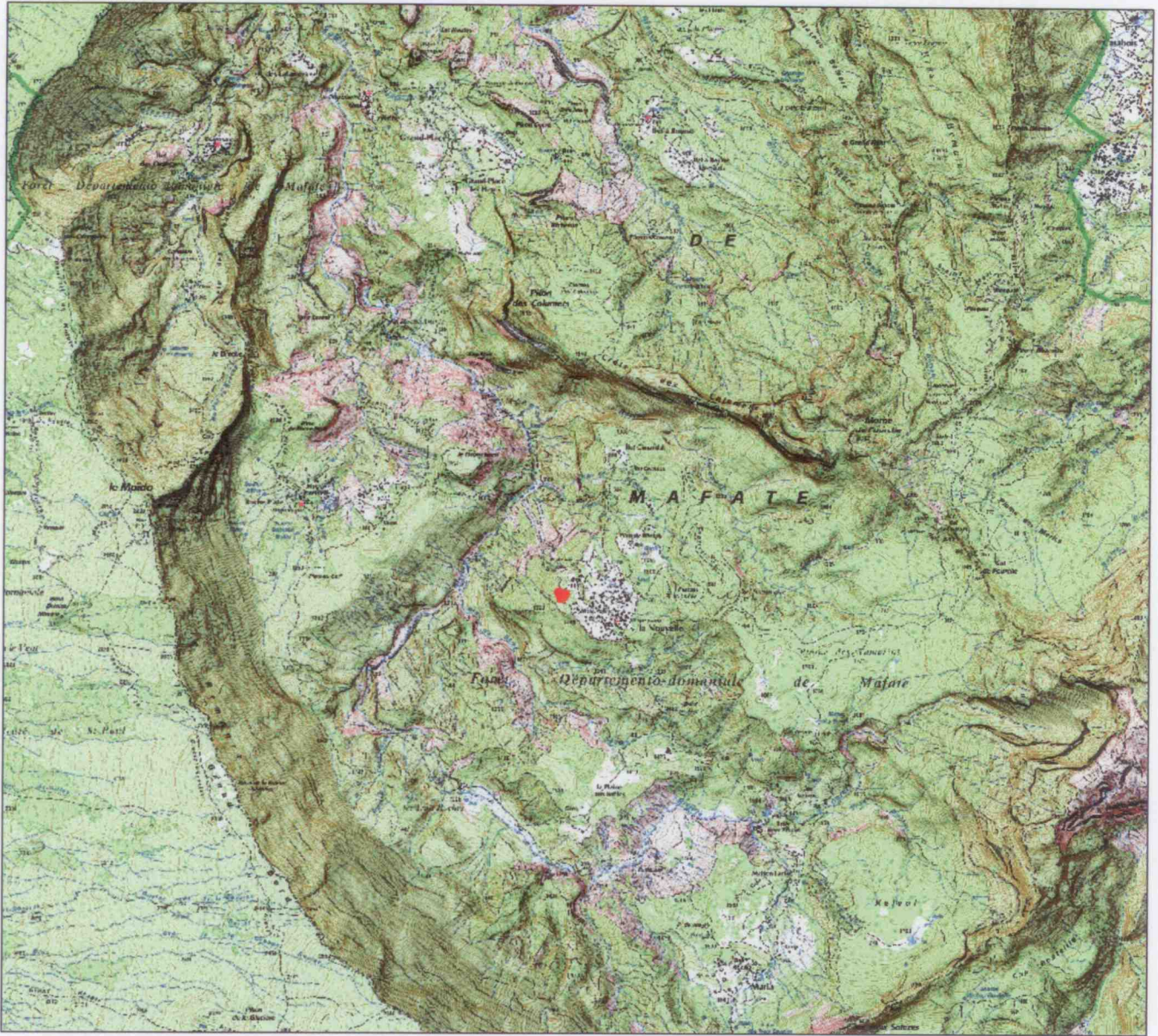
# HANGAR MAFATE HELICOPTERE




PLAN DE SITUATION AU 1/50 000

Auteur :

16/12/2015

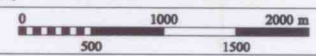


 Lot 2448

Commentaires



Echelle : 1 : 50000



© IGN / ONF Toute reproduction interdite



# Hélistation de La Nouvelle - Mafate Hélicoptère

## Schéma d'implantation de l'hélistation



# EUROCOPTER

## AS350 B3e

### AS350 B3e

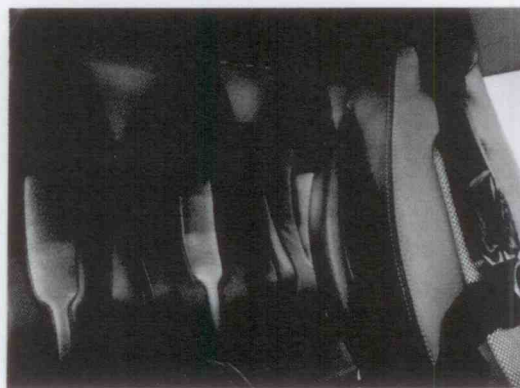
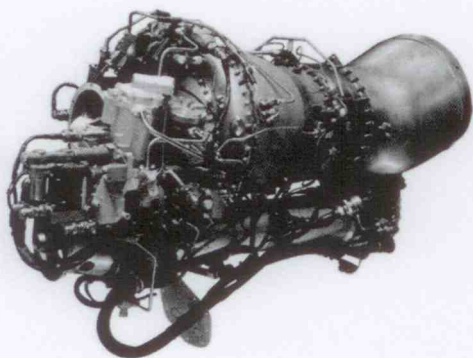
#### The enhanced version of the AS350 B3

The high-performance member of the Ecureuil family, the AS350 B3 outclasses all other single engine helicopters for performance, versatility, safety and low acquisition and maintenance costs. It excels in hot conditions and very high altitudes, and broke records when a series production model landed on the summit of Mount Everest in 2005 (altitude: 29,029 ft / 8,848 m). But the best keeps getting better – Eurocopter is taking this aircraft to a whole new level with its enhanced AS350 B3e.

The AS350 B3e is equipped with a Turbomeca Arriel 2D engine including a dual digital engine control system (FADEC), backed up with one independent control system. The cockpit has a dual LCD-screen Vehicle and Engine Multifunction Display (VEMD), allowing the pilot to see at first glance the main vehicle and engine parameters - thus reducing his workload and enhancing safety. Thanks to its versatile flat floored cabin, the AS350 B3e can be quickly and easily reconfigured for all types of missions, from utility and heavy load transport to medical evacuation, Search and Rescue, law enforcement or passenger transportation.

#### The AS350 B3e: Making the Best Even Better!

- New Arriel 2D engine including Engine Data Recorder
- Hydraulic system and flight control improvements
- Lower Direct Maintenance Cost
- Enhanced reliability
- Redesigned interior and seats
- Comfort and elegance



#### DIMENSIONS

Length (rotor rotating)	42.45 ft / 12.94 m
Height	10.96 ft / 3.34 m
Fuselage width	8.30 ft / 2.53 m
Main rotor diameter	35.07 ft / 10.69 m
Tail rotor diameter	6.10 ft / 1.86 m

#### WEIGHTS

Maximum weight	4,960 lbs / 2,250 kg
Maximum weight with external load	6,172 lbs / 2,800 kg

#### CAPABILITY

1 pilot + 5/6 passengers or 3,086 lbs / 1,400 kg with sling load

#### ENGINE

1 Turbomeca ARRIEL 2D turbine engine with FADEC	
Maximum take-off power on AS350 B3e	847 shp / 632 kW

#### PERFORMANCE AT MAX. GROSS WEIGHT (ISA, SL)

Maximum speed (VNE)	155 kts / 287 km/hr
Fast cruise speed	140 kts / 258 km/hr
Range with standard tank	345 nm / 638 km
Max endurance	4 hrs 23 min
Rate of climb	1,959 ft per min / 10 m per sec
Service ceiling	16,550 ft / 5,044 m
Hover ceiling IGE	13,200 ft / 4,023 m
Hover ceiling OGE	11,100 ft / 3,383 m

AS350 B3e - MP01.11-E. Designed by Eurocopter - Photos: P. Penna, Turbomeca, Eurocopter.

EUROCOPTER, AS350, Ecureuil are trademarks of the Eurocopter Group, Corporate Communications Department.

Eurocopter reserves the right to make configuration and data changes at any time without notice. The facts and figures contained in this document and expressed in good faith do not constitute any offer or contract with Eurocopter.

